



# West Mount Barren

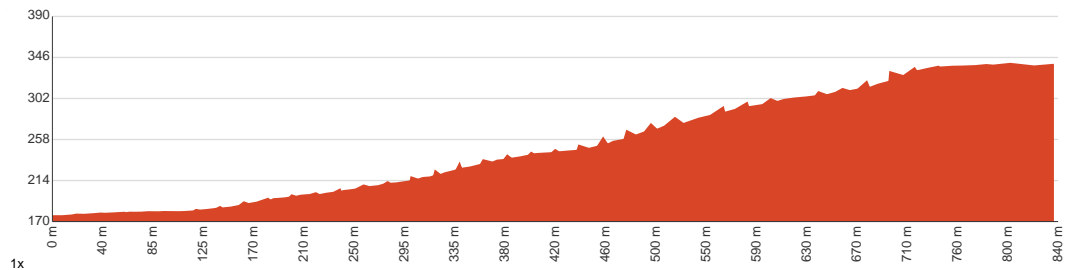
 45 min to 1 h

  
1.7 km  
Return

  
↑ 168 m  
↓ 168 m

 4  
Hard track

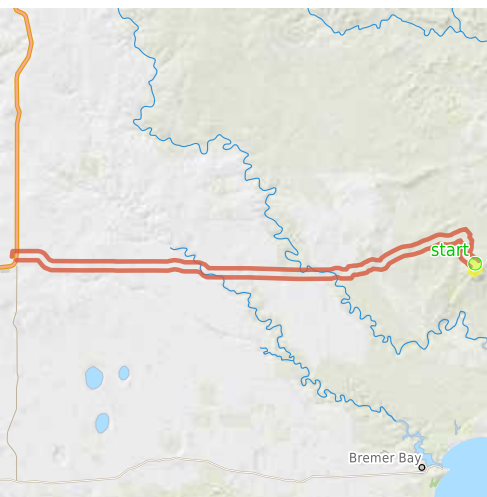
Starting from the car park at the end of the dirt road (off Quaalup N Road, which is a side road off Pabelup Drive), this walk takes you to Queelup Peak in Fitzgerald River National Park and back. The lookout offers visitors sweeping views of Gordon Inlet, Trigelow Beach, Point Ann and central Barrens. Queelup also refers to the Aboriginal Noongar name for this pale grey quartzite peak. The wildflowers in the area are pretty abundant with roughly 48 species, such as Barrens regalia and Barrens claw flowers, which grow only on the quartzite ridges and peaks of the Barrens Range. please take care as you traverse along the cliffs. The track is relatively rough and very steep at certain sections. Directional signage may be limited. Let us begin by acknowledging the Traditional Custodians of the land on which we travel today, and pay our respects to their Elders past and present.



Class 4 of 6 Rough track, where fallen trees and other obstacles are likely	
<b>Quality of track</b>	Rough track, where fallen trees and other obstacles are likely (4/6)
<b>Gradient</b>	Short steep hills (3/6)
<b>Signage</b>	Directional signs along the way (3/6)
<b>Infrastructure</b>	Limited facilities, not all cliffs are fenced (3/6)
<b>Experience Required</b>	Some bushwalking experience recommended (3/6)
<b>Weather</b>	Storms may impact on navigation and safety (3/6)

**Getting to the start:** From South Coast Highway, 1, Gairdner.

- Turn on to Devils Creek Road then drive for 34.1 km
- Keep right onto Collets Road and drive for another 12.4 km
- Turn right onto West Mount Barren Lookout Road and drive for another 3.8 km



### Before you start any journey ensure you;

- Tell someone you trust where you are going and what to do if you are late returning
- Have adequate equipment, supplies, skills & knowledge to undertake this journey safely
- Consider weather forecasts, park/track closures & fire dangers
- Can respond to emergencies & call for help at any point
- Are healthy and fit enough for this journey

If not, change plans and stay safe. It is okay to delay and ask people for help.

Share  
[Bushwalk.com](https://bushwalk.com/ij/N14WTB)  
[/ij/N14WTB](https://bushwalk.com/ij/N14WTB)





West Mount Barren Lookout Road

160

start



180

200

200

200

220

220

240

280

300

280

300

240

0.9

West Mount Barren

280

300

300

300

260

240

220

200

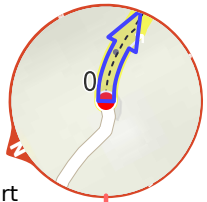
280

220

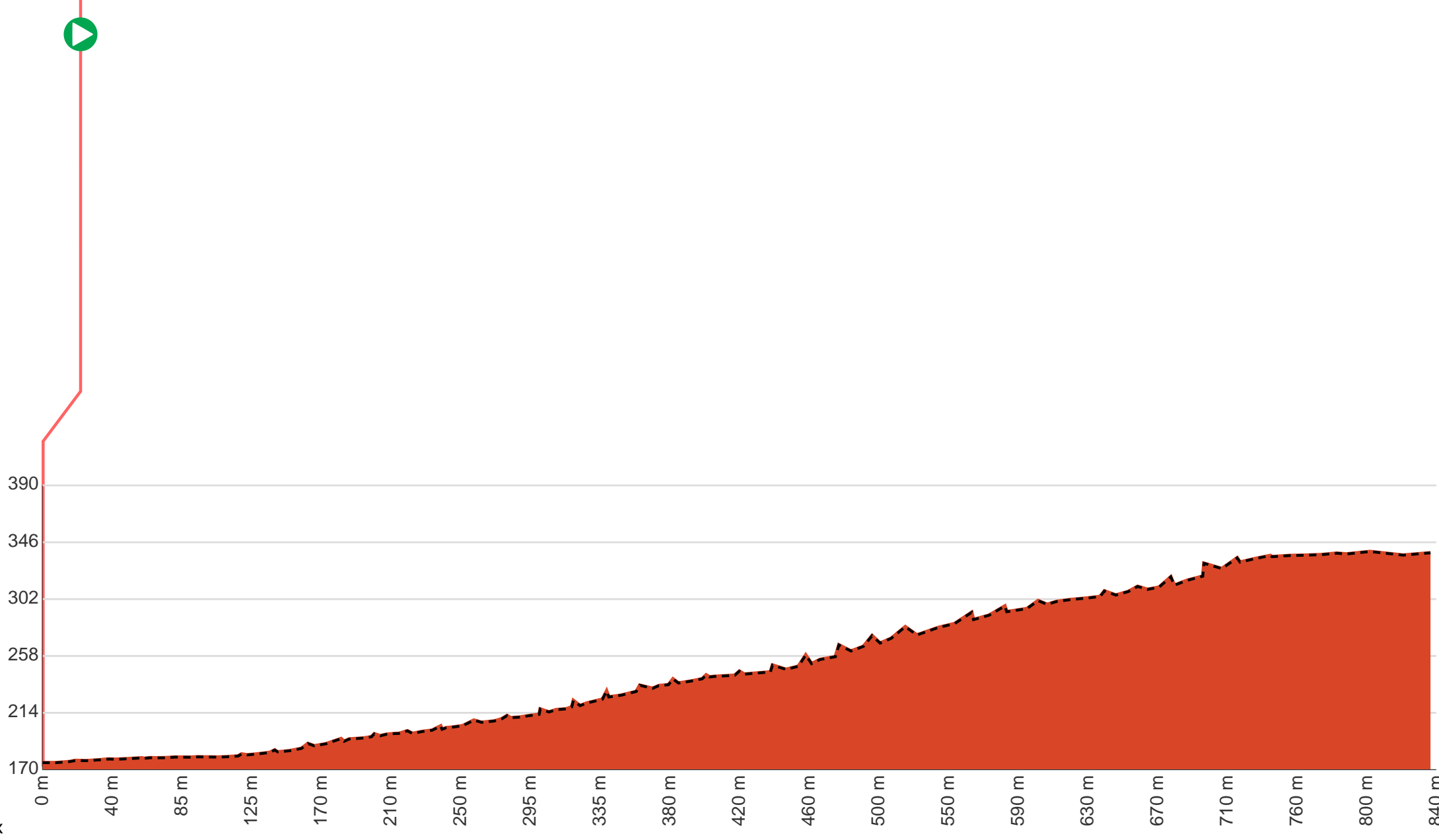
0.5

©

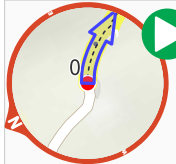




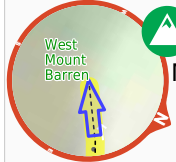
Start



**Getting started:** From the car park at the end of the dirt road (off Quaalup N Road which is a side road off Pabelup Drive), head towards the boardwalk marked by multiple signs. Head along the boardwalk (which then turns into a gravelly narrow track) to continue along the West Mount Barren Track.



**Start.**



After another 840 m come to "West Mount Barren".



Turn around here and retrace the main route for 840 m to get back to the start.